

# MANHATTAN BRANCH NEWSLETTER

March/April/May 2017 - Volume 97, Number 4  
AMERICAN ASSOCIATION OF UNIVERSITY WOMEN

## Highlights of Branch Meetings

### January 9, 2017 Branch Meeting

**Becky Catlin** from Kansas STARBASE Academy in Manhattan was the guest speaker at the January branch meeting at the Trinity Presbyterian Church. The U.S. Department of Defense has funded STARBASE for several years to promote careers in science, math, engineering and technology (STEM). Their target audience is underserved, underrepresented or socio-economically disadvantaged youth in grades 4-6th from rural or inner city settings. Reasons cited for the need for STARBASE are: in 2015 only 42% of high school students met the ACT readiness for science careers, rapid change in technology, globalization - U.S. needs to be able to compete in a world market, and science and engineering careers have expanded four times the rate of other occupations.



Becky Catlin

STARBASE sessions engender excitement and interest for careers in STEM. Each lesson is Hands On/Mind On, an inquiry-based curriculum. There are 49 sites in the U.S. and five in Kansas, the most in any State! They are located in Wichita, Manhattan, Topeka, Kansas City, and Salina. In 2012, six Manhattan schools were served with 234 students participating. Four years later, 28 schools with 1,328 students participated. Ms. Catlin stressed how vital the hands-on lessons were in getting fourth engaged and excited.

### February 13, 2017 Branch Meeting

The February meeting of the branch was held at the First Congregational Church with a program on Unconscious Bias. Patricia Hudgins and Mary Stamey began the dinner portion of the evening by providing Mystery History snippets of successful African-American women for each table to discover and discuss. Following dinner, Pat provided some backdrop to the definitions of unconscious bias and how it effects human interactions. Examples of how racism, sexism, and ageism exist because of all of our unconscious biases were explained. A commercial video and handouts complimented the discussion of what we can do when we encounter unconscious bias at work, at family gatherings or in the workplace.

One strong point of the evening: Speaking up can be revolutionary and won't be as bad as we think. Too often women don't want to make waves for fear of being labeled difficult, demanding, bossy, assertive or emotional.



Mary Stamey, diversity Barbies, and Patricia Hudgins

*(Continued on Page 9)*

### Inside this issue:

Highlights of Jan. & Feb. Branch Meetings . . . . .	1	New Manhattan Branch Members . . . . .	6
March, April & May Branch Meetings . . . . .	2	Grow Green Match Day & STEM . . . . .	7
President's Remarks . . . . .	3	Public Policy Updates . . . . .	8
Branch Scholarships . . . . .	4	January & February Meetings (cont.) . . . . .	9
Kansas AAUW State Board Liaison Report . . . . .	5	March/April/May Branch Calendar . . . . .	9

## Branch Meetings

**March 8, 2017**

### ***International Women's Day Celebration***

Several activities are planned for this global day of recognizing and honoring the social, economic, cultural, and political achievements of women. AAUW has lined up the following panel of local international women who will share issues relative to women's rights and equality in their home country. The panelists are Dr. Fatma Radhi (Iraq), neurologists; K-State's Dr. Paola Paez (Costa Rica), Center of Excellence in Human Ecology; and graduate students: Sneha Gullapalli (India), computer science, and Maria F. Rivero Perez (Bolivia), marketing.

**Location:** Holiday Inn Manhattan at the Campus, Landon Room  
Dinner at 6:00 p.m., cost \$20, RSVP by March 3\*  
Public Forum , no reservation necessary



Fatma Radhi



Paola Paez



Sneer Gullapalli



Maria Perez

**April 10, 2017\***

### ***Social-Emotional Health Challenges***

***Katrina Porter, LSCW, Katie's Way***

***Christiana Schadegg, Director, No Stone Unturned***

Katie's Way provides youth, young adults, and their families an opportunity to face mental health issues. They utilize a team-based approach to assessment and treatment, working with a staff of psychiatrist and psychologists ([katieswaymanhattan.com](http://katieswaymanhattan.com)). No Stone Unturned provides treatment to children with neurological or developmental impairments ([NoStoneUnturnedTLC.com](http://NoStoneUnturnedTLC.com)). These organizations provide crucial services to the growing needs of children and families in our community.

**Location:** First Congregational Church, 700 Poyntz Avenue  
Dinner at 6:00 p.m., cost \$12. Program at 6:45 p.m.



Katrina Porter



Christiana Schadegg



**May 8, 2017\***

### ***Annual Wrap-Up and Celebration***

Let's wrap up another year of excellent programming, philanthropy, friendships, community involvement, new members, and installation of officers at the **Annual Wrap-Up and Celebration**. The evening will include a special dinner prepared by the Meadowlark staff, a **Silent Auction** with the proceeds benefitting the branch's operations, the president's highlights of the year, and branch awards to outstanding members.

**Location:** Meadowlark Hills Community Room  
Dinner at 6:00 p.m., cost \$12.

\***Make meeting reservations** by email to [manhattanksaaauw@gmail.com](mailto:manhattanksaaauw@gmail.com) or call Marilyn Bunyan at 785-537-9026.

The **reservation deadline** is **Tuesday noon** the week prior to the meeting. If you need or can provide transportation to the meetings, contact Dede Brokesh at [dea@ldbconsultants.com](mailto:dea@ldbconsultants.com) or 785-410-4335. Make checks payable to AAUW.

Submitted by Tresa Landis and Connie Noble, Co-Vice Presidents of Programs

## President's Remarks



Karen Tinkler

As our 2016-2017 year comes to a close, it is time to reflect on our accomplishments, elect new officers, and think about new opportunities for the coming year. We have had many excellent programs and more are planned for the spring. Our branch will be hosting its 2<sup>nd</sup> Annual International Women's Day Event on Wednesday, March 8. A forum panel of international professional women and students will discuss women's rights and equality in their home country. At the April 10 meeting, staff from Katie's Way and No Stone Unturned will talk about how they serve children and young adults with social-emotional needs, followed by our annual May 8th Wrap-up and Celebration. These events do require thoughtful planning. We hope you will attend and consider working with the program committee to develop next year's program schedule and the 2018 International Women's Day Event. In addition, the branch interest groups have been very active, and perhaps we may want to explore the possibility of joining them or starting others . . . so please share your ideas on programs and interest groups!!!

We are proud to announce that Carly Wright, a junior in political science at K-State, was awarded the \$750 AAUW State Board's Scholarship to attend NCCWSL (National Conference for College Women Student Leaders). It is the premiere leadership conference for young women held at the University of Maryland, May 31 – June 3. In addition, our branch awarded three \$1,000 branch scholarship for non-traditional K-State students in 2016-17 to promising young women – some of which have attended our meetings to thank the membership in person. The application deadline for the 2017-18 scholarships is April 3. Encouraging girls to enter STEM fields continues to be an important focus at the national and branch levels! Our branch has designated funds to provide four \$125 grants to 7<sup>th</sup> grade girls to attend the 2017 K-State Summer STEM Institute in June.

We have a great branch and membership roster! Membership recruitment continues to be an important goal. We have had successful AAUW recruiting tables at political forums and other events, including the Community Fair in February, followed by get acquainted coffees for potential members. AAUW at K-State now has 80+ members - one of the largest campus organizations!

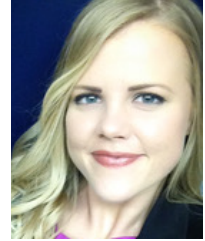
One area where we fall short, however, is filling elected board positions. The branch is still in need of a President, Vice President of Membership, and one Director-at-Large. We also need a volunteer to take over the silent auction at the May meeting. Maurine Pruitt has agreed to serve as branch Secretary. Serving on the board is a great opportunity to serve our impressive women's organization that has been working to enhance the education and opportunities for women since 1881! It provides rewarding opportunities to work with some wonderful community/campus members and leaders. Past officers are very willing to provide needed support and mentorship. We have the "flagship branch" in the state! I encourage our members to become more active in our branch. If each member would take the opportunity to serve one term on the board of directors to learn more about the workings of our branch, it may become easier each year to fill the positions of officers. Take the time to meet and greet our new members so that they will feel welcomed."

The branch seeks your input in other areas. What do you want our branch to be in the future? Is there anything that you would like to do with the branch other than the dinner meeting once a month or the interest groups? We have had a slight drop in attendance at the branch meetings, so we are open to suggestions on programs and other activities, especially those that enhance our members' ability to meet one another. Members also are still encouraged to invite potential members to our branch meetings.

If you would like to share your experience and work with the board to help fulfill the local branches goals to continue to grow and benefit women and girls, I encourage you to take a more active role in the branch. Please step forward to help fill your branch's needs. Share ideas and goals with new branch members. Share the work that needs to be done to keep the AAUW Manhattan Branch strong and active, and consider being part of the board. Please take the opportunity to serve as an officer of our branch.

## Branch Scholarship Recipient Jarah Cooper and Sarah May

**Jarah Cooper** is one of our three K-State scholarship recipients for the 2016/17 term. If you recognize her name it is because she was also one of our recipients in 2015/16. Jarah is attending K-State at the Salina campus and majoring in personal financial planning. She will be graduating with her bachelor's degree in May this year. She has two part time jobs while attending school. She works at the Student Life Center on campus and also at DVACK (Domestic Violence Association of Central Kansas). Last year she was active in the Student Governing Association. According to the reference letters sent on her behalf, she has been a "true campus leader" and "passionate on campus by demonstrating women's equity in education (especially so, since our Polytechnic campus has a majority of male students)".



Jarah Cooper

**Sarah May** is also one of our scholarship recipients for the 2016/17 term. She is originally from Eskridge, Kansas and earned her Associate Degree in Business Administration from Flint Hills Technical College. Sarah worked for Security Benefit in Topeka and eventually went to Allen Community College where she received an Associate Degree in Information Technology. She is now working on her bachelor's degree in computer information systems with a minor in Leadership Studies. Sarah will graduate in May 2018 from Kansas State. She worked last year at the Information Technology Assistance Center on campus. This year she is dedicating her time to her studies. Sarah is looking forward to joining us at our April branch meeting.



Sarah May



### Graduation Thanks from Scholarship Recipient

*Your generosity over the past few years has made this possible. I simply cannot express how grateful I am.  
From the bottom of my heart, thank you,  
Angel Alvarado*



### 2017/18 Kansas State Scholarships

The application for the AAUW Manhattan Branch's **2017/18 K-State Scholarships for Non-Traditional Female Students** is available and can be downloaded at the branch (<http://manhattan-ks.aauw.net/scholarships/applications/>) or Greater Manhattan Community (<http://www.mcfks.org/scholarships>) websites. Up to three \$1,000 each scholarships are available. Postmark deadline for the application, transcripts, and letters of reference is April 3, 2017. Electronic submission to [foundation@mcfks.org](mailto:foundation@mcfks.org) is encouraged.

Requirements are:

- Female student attending K-State during the 2017-2018 academic year. Students taking courses SOLELY through distance education do not qualify.
- Must be returning to school after at least three-year lapse in education. Applicants may have already entered or returned to college after this time lapse.
- Must have at least two complete semesters of credit remaining before graduation.
- Must be a bachelor's degree candidate enrolled for a minimum of twelve credit hours/semester or graduate degree candidate enrolled for a minimum of nine credit hours/semester or six with an graduate assistantship.

If you know of any women that may qualify, please let them know about this scholarship opportunity. AAUW members and their relatives ARE eligible as long as they meet the above requirements.

Submitted by Claudia Jones, Chair, Scholarship Committee

**Kansas AAUW State Board Liaison Report by Nancy Bolsen**

**Kansas AAUW State Board Announces 2017 NCCWSL SCHOLARSHIP WINNER**

The Kansas AAUW State Board announced the winner of the **2017 American Association of University Women National Conference for College Women Student Leaders (NCCWSL) Scholarship**. The State Board Scholarship committee for the 2017 scholarship selected **Carly Wright**, a student at Kansas State University to receive the scholarship. Kansas State University is a College/University Partner school.

Carly is from Clearwater, Kansas and a junior at K-State majoring in political science (prelaw) with a Spanish minor. She is Membership Chair of the AAUW@K-State student organization. In her application, Carly said this about going to NCCWSL: *The opportunity to improve my leadership skills, make new connections, and be exposed to the unfamiliar will equip me with the skills necessary to ensure that women everywhere have the opportunity to be educated, heard, and empowered.*



Carly Wright

The NCCWSL conference is May 31 - June 3, 2017 at the University of Maryland, College Park. The Kansas AAUW State Board voted to assist one Kansas NCCWSL Scholarship winner with conference expenses up to \$750 to attend the nation's premier leadership conference for college women. Students who attend NCCWSL share that the conference is a transformative experience. It prepares college women to be the next generation of leaders and helps them make their future what they want.

**We are reaching out to members for additional student support!** The \$750 NCCWSL scholarship only partially covers the \$1,500 conference cost. The branch has raised about \$150 through individual member contributions. If you would like to contribute, please give your donations to Claudia Jones, Chair, Branch Scholarship Committee.



Dr. Gwen Cooke



Christy Jones

**Join the Fun, Inspiration and Information at the  
2017 AAUW State Conference  
Overland Park, Kansas, April 22**

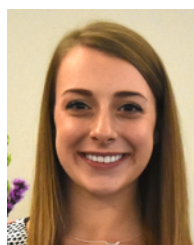


**AAUW Rising Stars** is the theme of the **2017 AAUW State Conference on Saturday, April 22 from 8:30 a.m. to 3:00 p.m.**

at Johnson County Community College in the acclaimed campus Hospitality and Culinary Academy Building in Overland Park, Kansas.



Kristina Haahr



Tara Terwilliger

Program highlights include these outstanding speakers: Dr. Gwendolyn Cooke author of A 90 Day Empowerment Journal for Young Women; Christy Jones, AAUW National VP Membership and Young Persons Task Force; Kristina Haahr, speaking about Mary Todd Lincoln and mental illness; and Tara Terwilliger; President of AAUW@K-State and winner of the 2016 Kansas AAUW State Board NCCWSL scholarship. The business meeting will include the election of state officers: President-Elect, Treasurer, VP of Programs, VP of Membership, Public Policy, and C/U Partnership. Bring items and your checkbook for the Silent Auction and Donation Table.

Please share this information with your friends and plan for a carload of women for a road trip to Overland Park. One car from each branch will receive mileage reimbursement from the Kansas AAUW State Board. Conference cost: **\$35** per member/\$10 per student, includes refreshments and lunch. No cost to student affiliate members at KSU, JCCC, and KCCC. Registration for the 2017 AAUW State Conference is available online at <http://aauw-ks.aauw.net/>. **Deadline is Monday, April 10.** Please encourage students to come and be one of our "rising stars". Students must register for lunch count and name tags.

## Four New Manhattan Branch Members

We are pleased to share with you that we have four new branch members! Some of you have met them at a branch meeting, interest group, or at one of our sponsored events. We will soon be providing a new page to be added to your yearbooks and updated membership list on our website. Please read the new member profiles below for **Jan Carlson** and **Suzanne Porath**. The other new members are **Ellyn Mulcahy**, associate professor in diagnostic medicine & pathology and Director of the Master of Public Health program at K-State. She received her Ph.D. in microbiology at Creighton University. **Barbara Rees** holds MA degree in history at Wellesley College and lives at Meadowlark. She joined AAUW because of her interest in the Great Decisions interest group. *Welcome Jan, Suzanne, Ellyn, and Barbara!*

### New Member Profiles - Jan Carlson and Suzanne Porath

**Jan Carlson** spent her growing up years on the family farm in Pottawatomie county. Her maternal grandmother who lived with her family had a great influence on Jan and her love for animals and gardening. Upon graduating from high school, her parents told Jan she could go to any college she wanted but K-State was the only one they would pay for! Jan says "KSU has been my academic and employment home for most of my life".



Jan Carlson

Jan is an experienced human resources professional with a bachelor's degree in consumer affairs and family economics. She currently serves as K-State's Global Campus representative for online and noncredit programs. Jan has had several years of corporate experience in manufacturing, telecommunications, banking and health care before joining the K-State team in 2013. She is a member of the Alumni Association, Ahern Fund and several Friends groups.

Jan's husband of 40 years, Jack, works at K-State as an Engineering Project Manager in campus Facilities Planning Office. They have two grown children, Denise and husband Kevin who live in Springfield, Missouri and son Brian and wife Sutida who live in Los Angeles, California. Sutida is from Thailand and Jan and Jack traveled to Thailand for the traditional Thai wedding. In their spare time, Jan and Jack enjoy working on their 400 acre pasture north of Manhattan. Jan loves the spring flowers, especially the iris and peonies. She says "I love all the seasons and am so glad that I live in Kansas where I can experience them all". Submitted by Jane Mullen.

\*\*\*\*\*



Suzanne Porath

**Dr. Suzanne "Suz" Porath** is an assistant professor at K-State responsible for the K-2 Literacy course, Block B practicum, and graduate level literacy courses in the Reading Specialist program. Originally from Muskego, WI, she was a medic in the Army National Guard in Waukesha, WI. Her bachelor's and master's degrees are from UW-Oshkosh. Suz began her teaching career in Monroe, WI. She and her husband have taught in Brazil, Lithuania, and Aruba for ten years. Later she received her Ph.D. at UW-Madison. Her dissertation work focused on readers/writers workshops for 3<sup>rd</sup> grade teachers. She supervised student teachers for UW-Madison and was adjunct faculty for Concordia University, Madison Center in the Reading Masters Program, Teacher Certification Program, and Adult Accelerated Education Program. She was a faculty member in the teacher education program at Edgewood College before accepting her current position. at KSU.

Suzanne's mom was a librarian, and she learned to love books from her. Suz is an avid reader, collector of books, cookbooks (loves cooking), and seeks out bookstores during her travels. Some of her favorite places are Fernando de Noronha, a small island off the north coast of Brazil; Bonaire, Netherland Antilles; Italy; and London. She and her husband enjoy camping and the North/South Dakota trip they took two summers ago. For her July 21 birthday, she traveled to Jamestown, ND and saw the white buffalo (her favorite animal - which makes Kansas very attractive). She has a 12 year old Shetland Sheepdog named "Rasa." She loves movies and is a Bogart fan, along with Star Wars and Star Trek. She looks forward to Concert on the Prairie, as they had Concerts on the Square in Madison, WI.

Submitted by Dede Brokesh.

## GROW Green Match Day

*You make a gift. We make it grow.*

**Friday, April 21, 2017**  
**Colony Square Atrium**  
**555 Poyntz Avenue, 7 a.m. - 7 p.m.**  
**(or give online)**

### Let's Grow our KSU Scholarship Funds with Matching Donations of 50%

The **5th Annual Grow Green Match Day** on Friday, April 21 provides an **incredible opportunity** to grow our **AAUW Manhattan Branch KSU Scholarship Fund!** Once a year, the Greater Manhattan Community Foundation will match donations made to our scholarship fund at 50%.

Individual contributions ranging from \$25 - \$1,000 per organization will receive a local match at \$.50 per \$1, so a \$50 gift can receive a \$25 match.

Combined donations up to a total of \$20,00 will be matched at 50%, giving a maximum of \$10,00 in matching funds to any one organization. Last year, AAUW at the raised an amazing \$785 for our scholarship fund at the event!

Gifts can be made by cash or check - made payable to the GMCF (Greater Manhattan Community Foundation) or by credit card online at [growgreenmanhattan.com](http://growgreenmanhattan.com) from 12 a.m. -11:59 p.m. Cash and checks should be made in person at the Grow Green event. A separate form will be used to indicate which organization(s) will benefit. Throughout the day, one individual donor who has made a gift in person at the event will be randomly chosen every hour to win extra green (\$100) for the charity of their choice. The three participating non-profits with the most donors coming in person to the event will win extra prize money; \$500 for 1st place, \$300 for 2nd place, and \$200 for 3rd place.

**This is a chance to multiply the difference we make in providing scholarships to K-State female students**, and it is truly a missed opportunity if we don't take full advantage. Your gift, no matter what size, is vital for helping us grow our scholarship fund and have an even greater impact for years to come. *Go Grow Green AAUW - it's a perfect*

### Branch Again Supports STEM Scholarships!



STEM SUMMER INSTITUTE  
2017

In support of AAUW's commitment to encourage more women and girls to enter STEM (science, technology, engineering and mathematics) fields, the **Manhattan Branch** will again offer **four \$125 scholarships** for 7th grade girls to attend the **Summer STEM Institute 2017 at Kansas State University in June**. This exciting academic adventure is a cooperative effort supported by a Dept. Defense grant, USD383, and K-State ([www.usd383.org/stem](http://www.usd383.org/stem)). This year, the grants will only be given to 7th grade girls because the interest in STEM diminishes somewhat after the 6th grade. Hopefully, this will encourage more 7th grade girls to participate

A short application has been distributed to the teachers in the Manhattan schools. Students write a short essay about why they would like to participate and their interest in STEM fields. The branch will then collect, review, and rate the essays. If any of you would like to help in the selection process, please let me know. It is not very time consuming, and your input is so important! It is inspiring to read about how these young girls are excited to explore STEM careers through these fun and engaging summer learning experiences on a college campus! Thank you for your support in this important effort. Last year we had eleven essays to evaluate. If you are interested in helping, just email me, and I will send or deliver the essays to you after March 3. Claudia Jones ([interiors1@cox.net](mailto:interiors1@cox.net)) Chair, Scholarship Committee.

### AAUW National Convention, June 14-17 in Washington D.C.

Join in on the many opportunities to learn new skills, gain insights, and connect women leaders. The AAUW National Convention Provides engaging opportunities for professional and personal growth so that women leaders everywhere can maximize their impact. Plus, you can take of major attractions in our host city with pre- and post-convention tours. Register at <https://aauw.org>.

## Public Policy Update by Jean Lee

From the Winter 2017 AAUW Outlook (an award winning quarterly magazine): AAUW intends to continue its nonpartisan work under the Trump administration with a 12-step program for these uncharted political waters. AAUW's nonpartisan leadership and research-based advocacy are needed more than ever. Briefly, here are the first eight steps. Read the entire article in your copy of Outlook. Our work begins:



1. Begin as we mean to proceed. We will continue to speak truth to power as we have for 135 years, and we will be valuable allies or fierce critics, depending on what's warranted at the time in accordance with AAUW's member adopted Policy Program.
2. Remember that personnel decisions are policy decisions.
3. Hold their feet to the fire—and remain nonpartisan. Our work has always been political (taking policy positions and working toward a common goal) but not partisan (firmly adhering to a party, faction, or person.)
4. Understand that facts do matter. AAUW has always known that good research is the basis of sound public policy and positive societal change.
5. Be an ally in the fight against hate. AAUW stands against bullying, bias, and bigotry of any kind.
6. Stand up to everyday sexism whenever you can.
7. Support women leaders.
8. Never forget that voting rights and fair representation are fundamental to our democracy.



Women are still outnumbered by men in most leadership positions in Manhattan. Have you served on a **City of Manhattan or Riley County Advisory Board**? Would you consider running for City or County Commission? Become a member of an advisory board! It is a good way to serve the community and to become familiar with city and county issues. With that experience, consider running for City or County Commission. There are 25 city advisory boards and 17 Riley County boards. You will find these listed on the web sites for Manhattan (go to I want to volunteer) and for Riley County (Riley County Commission/Advisory Councils/Boards). Talk with a city or county commissioner. It is time to become involved!

## Recruitment Success at Community Fair



Maurine Pruitt, Connie Noble, and Karen Tinkler at the AAUW table in the Manhattan Town Center.

Many visitors were attracted to the AAUW table at the **Manhattan Community Fair** on February 4. About 20 potential members signed up for additional information. Maurine Pruitt will be sending the visitors a membership packet. President Karen Tinkler has scheduled a get acquainted coffee for potential members on March 11 at the Bluestem Bistro, 10:00 a.m.

All members are encouraged to invite a potential member to a branch meeting! First time dues are only \$45.50 through Shape the Future Campaign. Dues for regular members are \$70. Graduate student dues are only \$18.81 (new) or \$49 (renewal). An application is available at <https://manhattan-ks.aauw.net/> or by emailing [manhattanksaauw@gmail.com](mailto:manhattanksaauw@gmail.com). KSU undergraduates are eligible for a FREE membership; go online at [www.aauw.org](http://www.aauw.org), email us or contact Tara Terwilliger ([tara102@ksu.edu](mailto:tara102@ksu.edu)), AAUW at K-State.



**January 9, 2017 Branch Meeting (from page 1)**

Area students are bussed to the National Guard Armory where the Manhattan STARBASE trailers are housed. A non-profit group that began in 1997 has enhanced the success of the program by providing each student with a T-shirt and other extras. This has ensured the continuance of the program until federal funds come through each year.

**February 13, 2017 Branch Meeting (from page 1)**

Language is powerful, but it doesn't have to stay that way. We do not need to respond to every comment we hear. Silence too, can be powerful. Empower yourself. Submitted by Mary Stamey.



Jane Mullen, Marilyn Bunyan, Claudia Jones, Mary Ellen Barkley, Deb Nauerth, Patricia Hudgins, Gloria Freeland, and Mary Stamey discussing Mystery History snippets at the February branch dinner and meeting.

**MARCH/APRIL/MAY BRANCH CALENDAR**

March	3	Sign-up deadline	Noon	March 8 branch meeting reservation deadline
	4	Lunch & branch meeting	11:30 & noon	Vista Drive-In, 911 Tuttle Creek Blvd.
	8	Branch meeting	6:00 p.m.	Holiday Inn at Campus, Landon Room
	9	Great Decisions	10:00 a.m.	Meadowlark Hills
	10	Book Talk	10:00 a.m.	Manhattan Public Library
	28	Serendipity	11:30 a.m.	Meadowlark Hills
April	3	Branch Scholarship	Application due	Greater Community Foundation
	3	Lunch & Board Meeting	11:30 & Noon	Vista Drive In, 1911 Tuttle Creek Blvd.
	4	Sign-up deadline	Noon	April 10 branch meeting reservations due
	10	Branch meeting	6:00 p.m.	First Congregational Church
	13	Great Decisions	10:00 a.m.	Meadowlark Hills
	14	Book Talk	10:00 a.m.	Manhattan Public Library
	28	Serendipity	11:30 a.m.	Meadowlark Hills
May	1	Lunch & Board Meeting	11:30 & Noon	Vista Drive In, 1911 Tuttle Creek Blvd.
	4	Sign-up deadline	Noon	May 8 branch meeting reservations due
	8	Branch meeting	6:00 p.m.	Meadowlark Hills
	11	Great Decisions	10:00 a.m.	Meadowlark Hills
	12	Book Talk	10:00 a.m.	Manhattan Public Library
	25	Serendipity	11:30 a.m.	Meadowlark Hills

**AMERICAN ASSOCIATION OF  
UNIVERSITY WOMEN**

Karen Tinkler  
7000 Mill Cove Drive  
Manhattan, KS 66503

**Empowering Women Since 1881**



Email:

[manhattanksaauw@gmail.com](mailto:manhattanksaauw@gmail.com)

**We're on the Web**

<https://manhattan-ks.aauw.net/>

[www.aauw.org](http://www.aauw.org)

The American Association of University Women, founded in 1881, is a nationwide community with more than 170,000 members and supporters, 1,000 local branches, and 800 college and university (C/U) partners. Our mission is to advance equity for women and girls through advocacy, education, philanthropy, and research. In the 2016-2017 academic year, for example, AAUW has committed more than \$3.7 million in fellowships and grants to outstanding women, AAUW branches, and community nonprofit organization. It continues to have a dynamic influence on policymakers, educators, employers, and communities to break through barriers and enhance opportunities for women.

***Follow us on:***

**National**

Facebook: [AAUW](#)

Twitter: [AAUW \(@AAUW\)](#)

**Branch**

[AAUW Manhattan](#)

[AAUW Manhattan \(@AAUW-Manhattan\)](#)

**Student Organization**

[AAUW at K-State](#)

[AAUW at KSU \(@AAUW\\_KSTATE\)](#)